



# **X1-SMART G2**

**5 kW / 6 kW / 7 kW / 7.5 kW**

**8 kW / 9 kW / 10 kW**

## **Installation Manual**

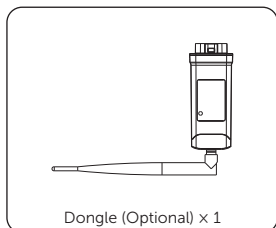
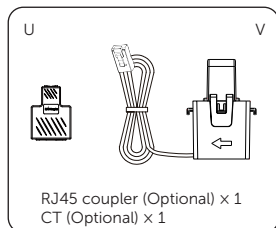
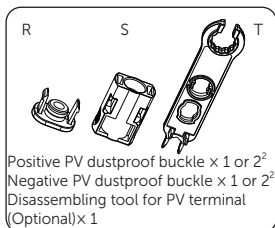
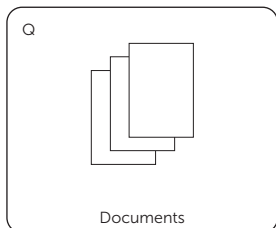
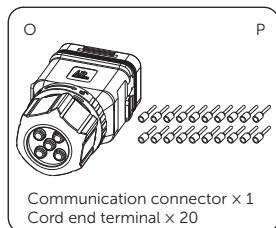
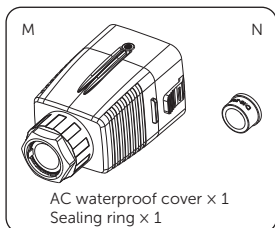
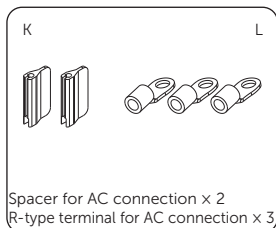
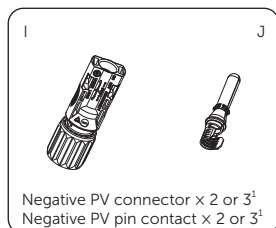
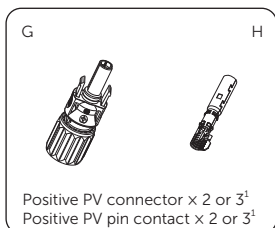
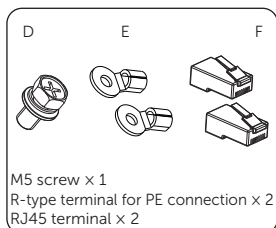
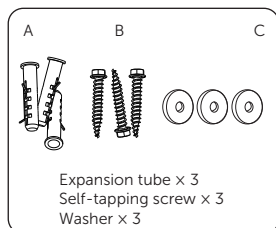
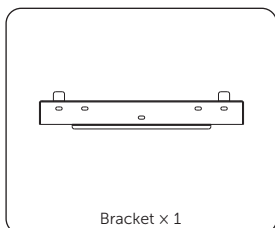
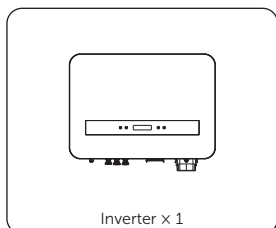
Version 0.0

[www.solaxpower.com](http://www.solaxpower.com)



eManual in the QR code or  
at [www.solaxpower.com](http://www.solaxpower.com)

Packing List / Packliste / Liste du matériel livré / Lista de piezas / Lista da embalagem / Paklijst / Contenuto della confezione / Zawartość opakowania / Seznam balení / Packlista / Listă de ambalare / Опаковъчен лист / Pakkeliste / Λίστα συσκευασίας / Pakkeleht / Pakkausluettelo / Popis pakiranja / Csomaglista / Pakuotės turinys / Iepakojuma saraksts / Zoznam položiek balenia / Seznam pakiranja / Kutu Listesii / Lista de Embalagem



Note:

\* Refer to the actual delivery for the optional accessories.

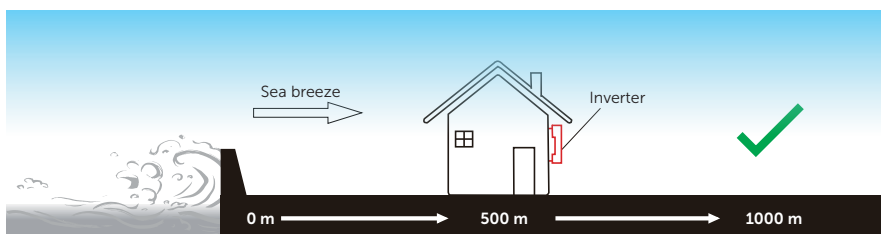
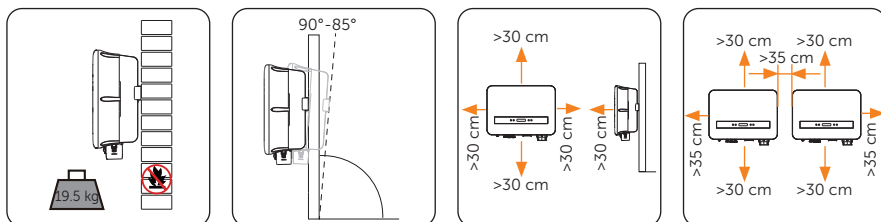
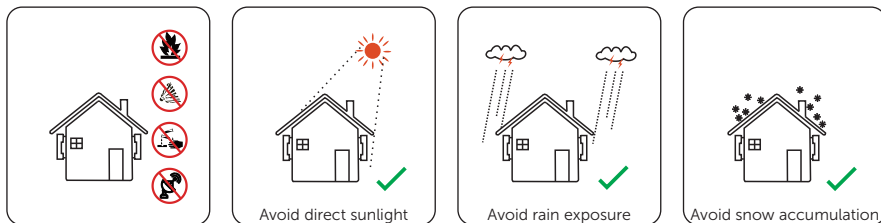
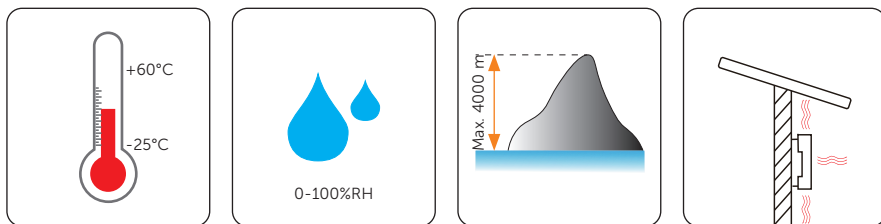
<sup>1</sup> 2 pcs for inverters with two inputs of MPPT,

3 pcs for inverters with three inputs of MPPT.

<sup>2</sup> 1 pc for inverters with two inputs of MPPT,

2 pcs for inverters with three inputs of MPPT.

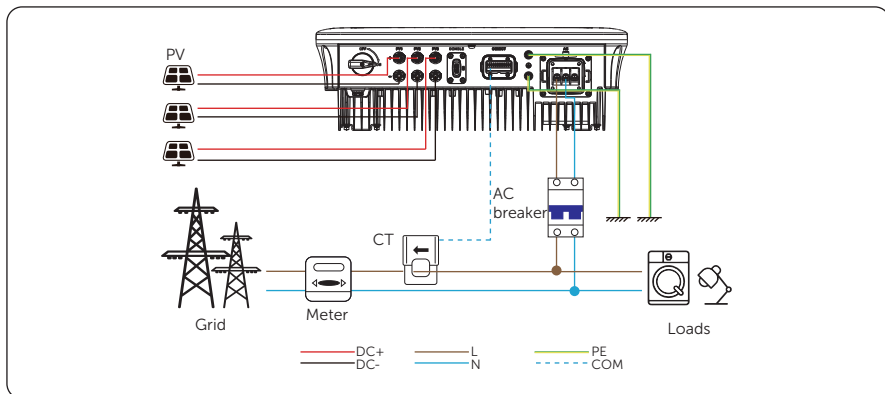
Mounting Location / Montageort / Emplacement de montage / Ubicación de montaje / Localização de montagem / Bevestigingslocatie / Posizione di montaggio / Lokalizacja miejsca montażu / Montážní místo / Monterings plats / Locație de montare / Место за монтаж / Monteringssted / Τοποθεσία στερέωσης / Paigalduskoht / Asennuspaikka / Mjesto postavljanja / Rögzítési hely / Montavimo vieta / Montāžas vieta / Miesto inštalácie / Mesto namestitve / Montaj Konumu / Local de montagem



**NOTICE!**

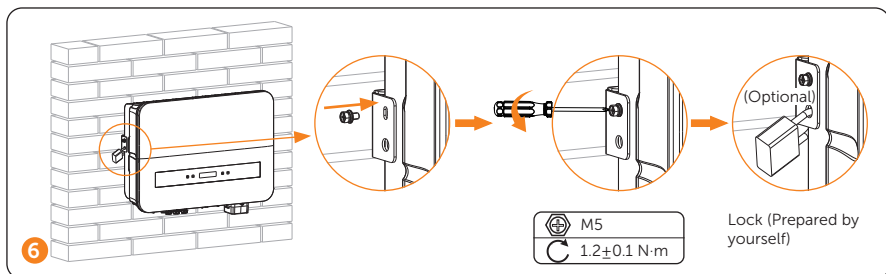
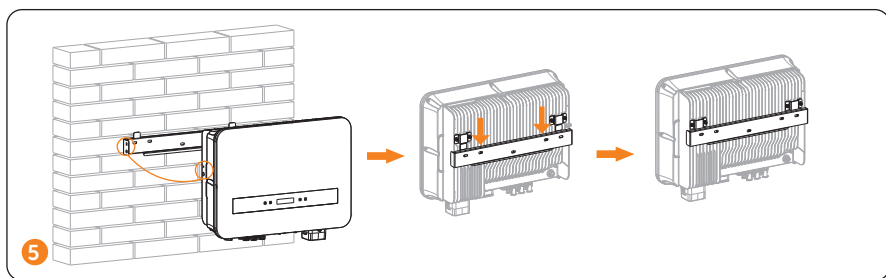
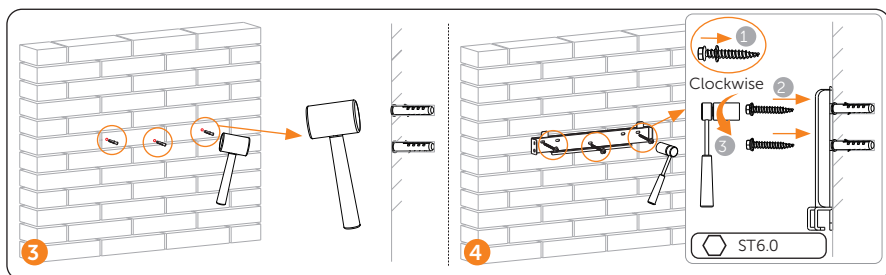
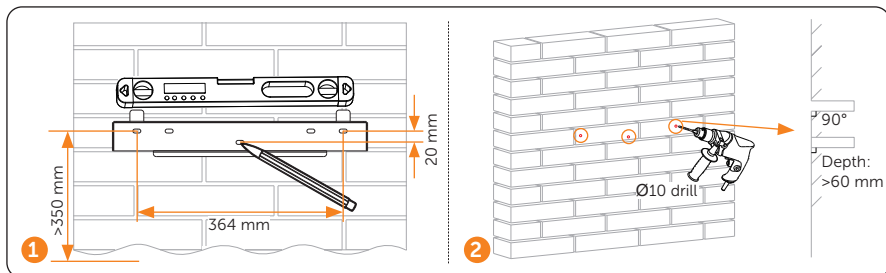
- For outdoor installation, precautions against direct sunlight, rain exposure and snow accumulation are recommended.
- Exposure to direct sunlight raises the temperature inside the device. This temperature rise poses no safety risks, but may impact the device performance.

Wiring Diagram / Schaltplan / Schéma de câblage / Diagrama de cableado / Diagrama de ligação / Bedradingsschema / Schema elettrico / Schemat potężerń / Schéma zapojení / Kopplingschema / Schemă de conexiuni / Схема на свързване / Ledningsdiagram / Διάγραμμα συνδεσμολογίας / Ühendusskeem / Kytkentäkaavio / Dijagram ožičenja / Kapcsolási rajz / Elektros laidų montavimo schema / Elektroinstalācijas shēma / Schéma zapojenia / Električna shema / Bağlantı Şeması / Diagrama de fiação

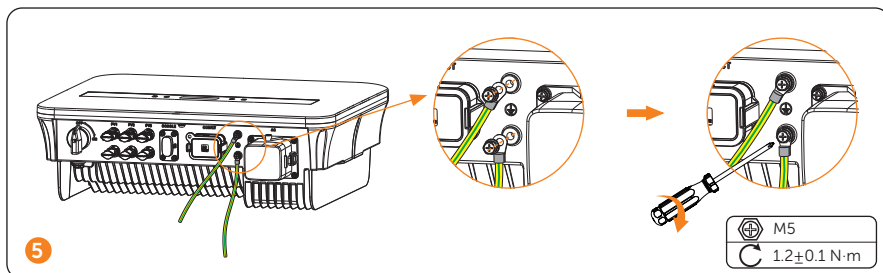
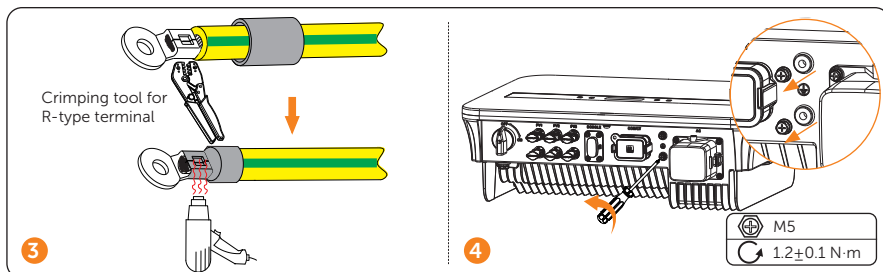
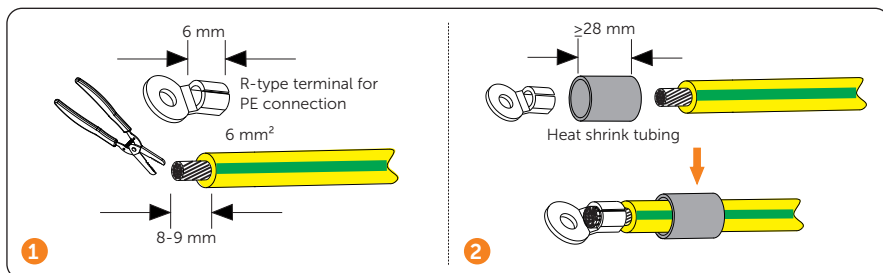


\* Breaker recommended: 63 A

Mechanical Installation / Mechanische Installatie / Installation mécanique / Instalación mecánica / Instalação mecânica / Mechanische installatie / Installazione meccanica / Instalacja mechaniczna / Mechanická instalace / Mekanisk installation / Μηχανική εγκατάσταση / Mehaaniline paigaldus / Mekaaninen asennus / Mehanička ugradnja / Mechanikai telepítés / Mechaninis montavimas / Mehāniskā uzstādīšana / Mechanická inštalácia / Mehanska namestitvev / Mekanik Kurulum / Instalação Mecânica



PE Connection / Schutzerdungs-Anschluss / Connexion PE / Conexión PE / Ligação à Terra / PE-aansluiting / Collegamento PE / Połączenie PE / PE připojení / PE-anslutning / Conexiune PE / PE връзка (земя) / Jordforbindelse / Σύνδεση PE / PE ühendus / PE-yhteys / PE priključak / PE bekötés / PE (apsauginio įžeminimo) kontaktas / PE savienojums / Pripojenie ochranného vodiča / PE povezava / PE Bağlantısı / Conexão PE



\* The external protective grounding terminal must meet at least one of the following requirements.

- If the conductor cross-section of the PE cable is not less than 10 mm<sup>2</sup> for copper wire or 16 mm<sup>2</sup> for aluminum wire, it is recommended that both the external protective grounding terminal and the grounding terminal on the AC side be reliably grounded.
- If the conductor cross-section of the PE cable is less than 10 mm<sup>2</sup> for copper wire or 16 mm<sup>2</sup> for aluminum wire, ensure that both the external protective grounding terminal and the grounding terminal on the AC side are reliably grounded.

AC Side Connection / Wechselstrom-seitiger Anschluss / Connexion côté CA / Conexión lateral de CA / Ligação lateral CA / Aansluiting wisselspanningszijde / Collegamento lato CA / Połączenie po stronie AC / Boční připojení střídavého proudu / Anslutning på AC-sidan / Conexiune laterală c.a. / СВЪРЗАВАНЕ ОТ AC СТРАНАТА / AC-sidetilslutning / Πλαϊνή σύνδεση AC / Vahelduvooluuloolne ühendus / AC-puolen liitäntä / Priključak za izmjeničnu struju (AC) / Váltóáram-oldali bekötés / AC (kint. sr.) šoninis kontaktas / Maiņstrāvas puses savienojums / Pripojenie na strane striedavého prúdu / AC stranska povezava / AC Yan Bağlantı / Conexão do Lado CA

Sealing ring ①

AC waterproof cover

Disassemble

Sealing ring ②

Remove by hand

①

②

AC cable

Diameter

| Diameter (mm) | Sealing ring |
|---------------|--------------|
| 16-21         | ①            |
| 21-24         | ②            |

R-type terminal for AC connection

AC cable

65 mm

12 mm

③

Crimp

④

Crimping tool for R-type terminal

⑤

⑥

⑦

AG

L N PE

M5

1.2±0.1 N·m

Always keep this side outwards

⑧

⑨

Click!

M5

1.2±0.1 N·m

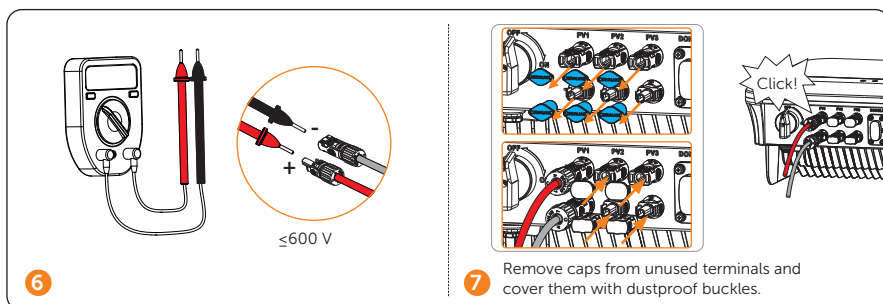
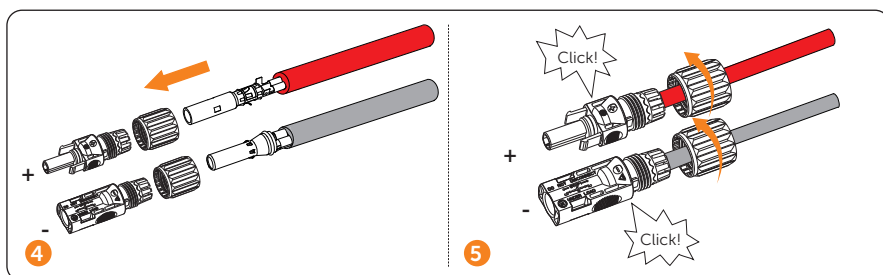
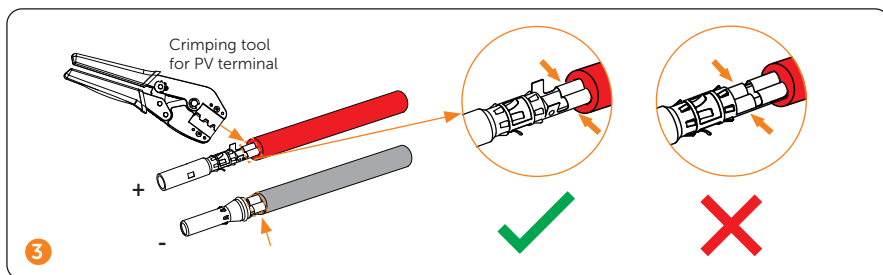
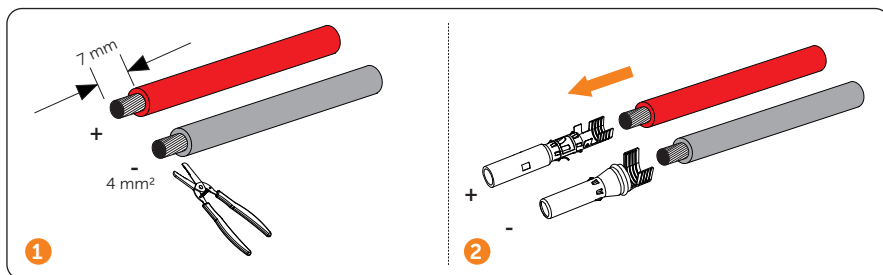
⑩

Hand-tight

M5

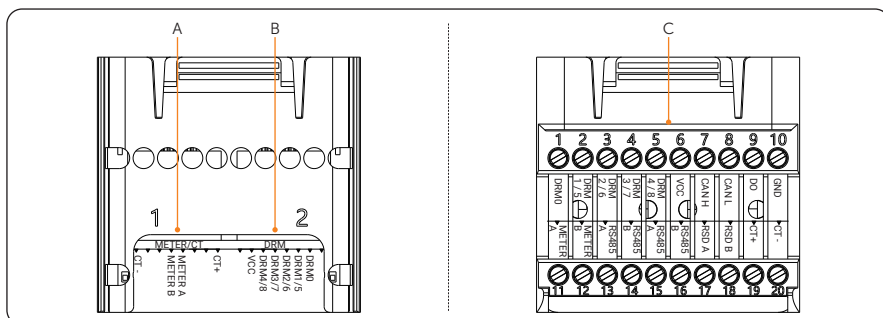
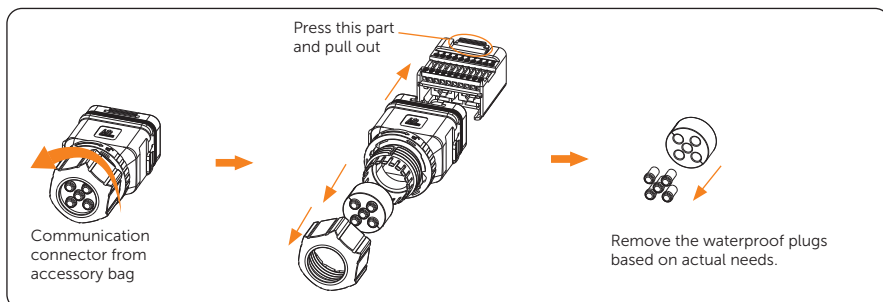
1.2±0.1 N·m

DC Side Connection / Gleichstrom-seitiger Anschluss / Connexion côté CC / Conexión lateral de CC / Ligaçao lateral CC / Aansluiting gelijkspanningszijde / Collegamento lato CC / Potaczenie po stronie DC / Boční připojení stejnosměrného proudu / Anslutning på DC-sidan / Conexiune laterală c.c. / Свързване от DC страната / DC-sidetilslutning / Πλαϊνή σύνδεση DC / Alalisvoolupoolne ühendus / DC-puolen liitäntä / Priključak za istosmjernu struju (DC) / Egyenáram-oldali bekötés / DC (nuol. sr.) šoninis kontaktas / Līdzstrāvas puses savienojums / Pripojenie na strane jednosmerného prúdu / DC stranska povezava / DC Yan Bağlantı / Conexão do Lado CC



Communication Connection / Kommunikations-Anschluss / Branchement de communication / Conexión de comunicaci3n / Ligaç3o à Comunicaç3o / Communicatie-aansluiting / Collegamento comunicazione / Połączenie komunikacyjne / Komunikaační pŕipojení / Kommunikationsanslutning / Conexiune de comunicare / Коммуникационная вŕязка / Kommunikationsforbindelse / Σύνδεση επικοινωνίας / Sideühendus / Tiedonsiirtoliitääntä / Prikluãak za komunikaciju / Kommunikaci3s bek3t3s / Duomenų ryšys / Sakaru savienojums / Pripojenje komunikácie / Komunikacijska povezava / İletişim Baęlantısı / Conexão de Comunicaç3o

Step 1: Disassemble the communication connector



• Pin Definition of Section A (METER/CT)

|                |     |   |   |         |         |   |   |     |
|----------------|-----|---|---|---------|---------|---|---|-----|
| Pin            | 1   | 2 | 3 | 4       | 5       | 6 | 7 | 8   |
| Pin Definition | CT+ | X | X | METER A | METER B | X | X | CT- |

• Pin Definition of Section B (DRM)

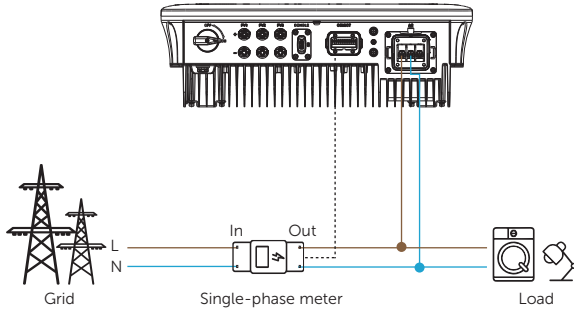
|                |   |      |        |        |        |        |     |   |
|----------------|---|------|--------|--------|--------|--------|-----|---|
| Pin            | 1 | 2    | 3      | 4      | 5      | 6      | 7   | 8 |
| Pin Definition | X | DRM0 | DRM1/5 | DRM2/6 | DRM3/7 | DRM4/8 | VCC | X |

• Pin Definition of Section C

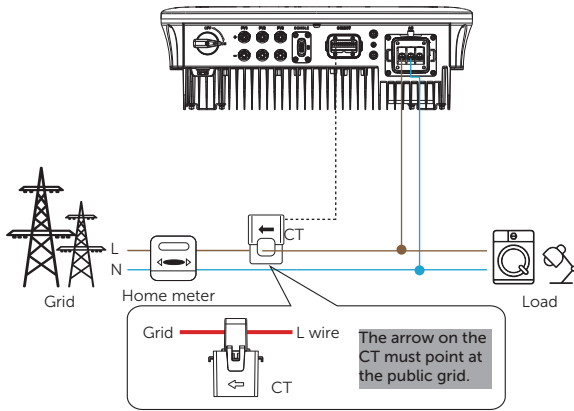
|     |                |     |                |     |                |     |                |
|-----|----------------|-----|----------------|-----|----------------|-----|----------------|
| Pin | Pin Definition | Pin | Pin Definition | Pin | Pin Definition | Pin | Pin Definition |
| 1   | DRM0           | 6   | VCC            | 11  | METER A        | 16  | RS485 B        |
| 2   | DRM1/5         | 7   | CAN H          | 12  | METER B        | 17  | RSD A          |
| 3   | DRM2/6         | 8   | CAN L          | 13  | RS485 A        | 18  | RSD B          |
| 4   | DRM3/7         | 9   | DO             | 14  | RS485 B        | 19  | CT+            |
| 5   | DRM4/8         | 10  | GND            | 15  | RS485 A        | 20  | CT-            |

\* When connecting with meter or CT, users can connect via either section A (recommended) or section C. When connecting with DRM, users can connect via either section B (recommended) or section C. For DRM, only DRM 0 is available now.

Meter connection diagram



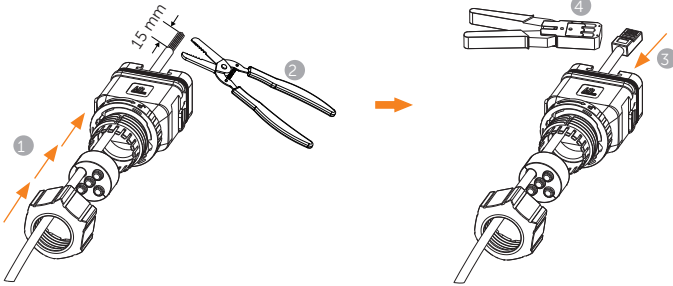
CT connection diagram



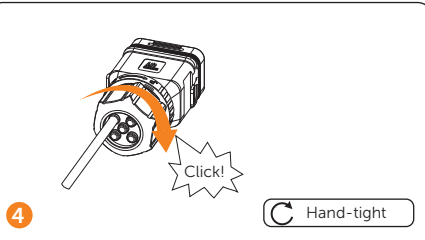
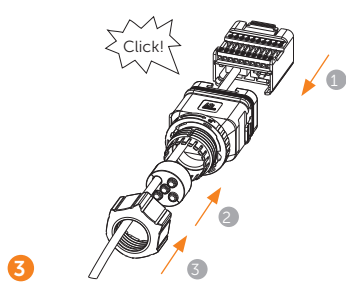
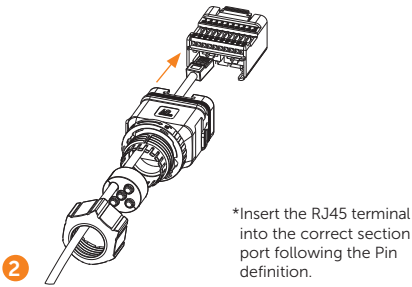
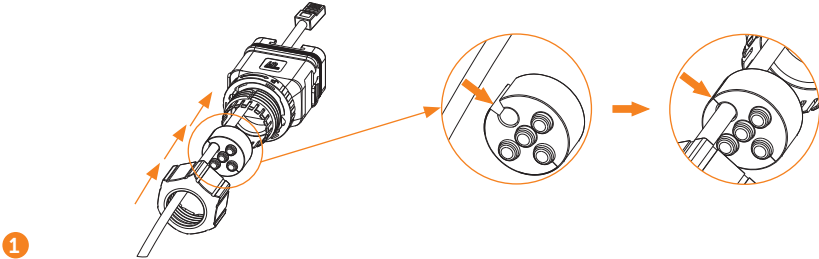
Step 2: Prepare and make the communication cable(s) according to the actual application scene

a. If connect via section A/B (Use network cable CAT5):

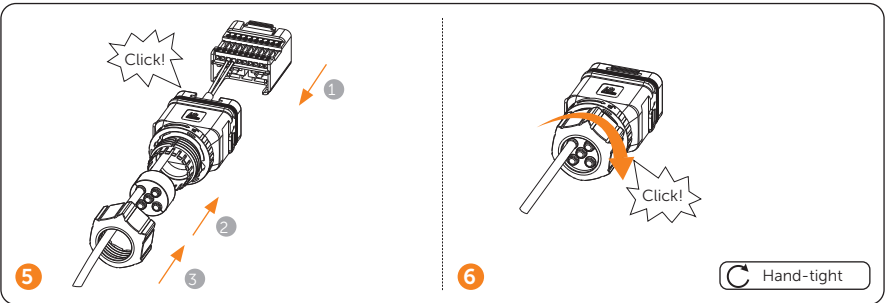
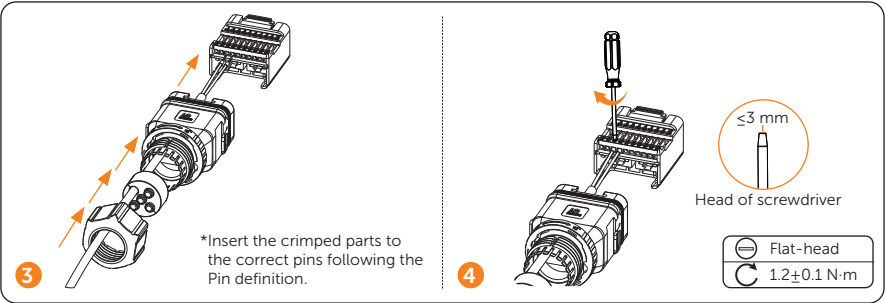
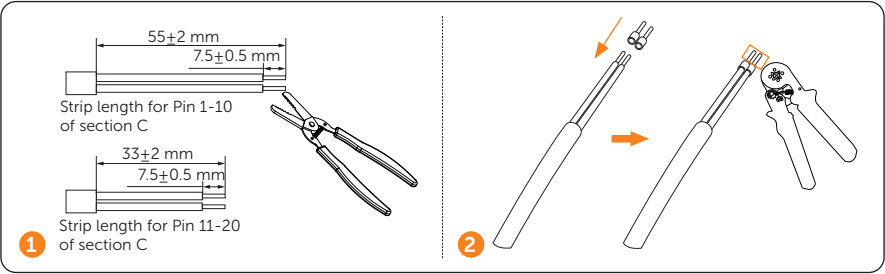
If the communication cable is without RJ45 terminal



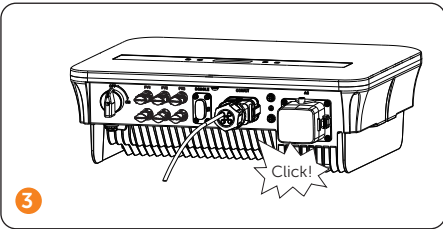
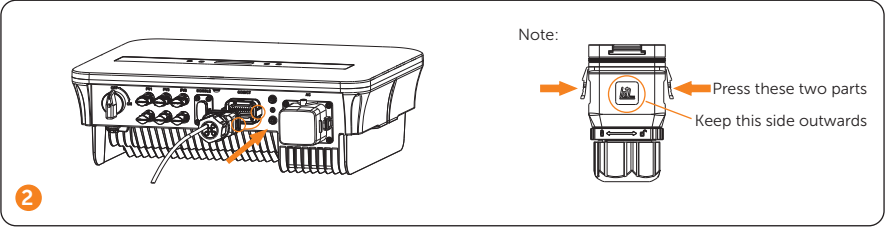
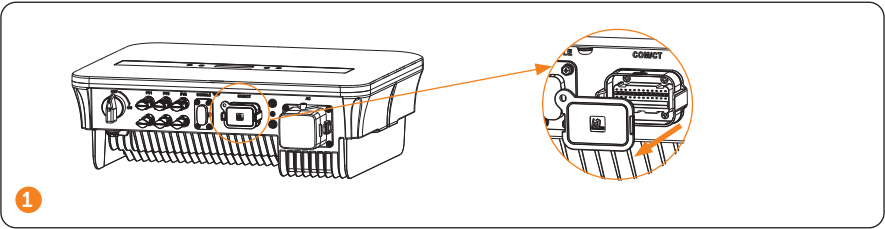
If the communication cable is with RJ45 terminal



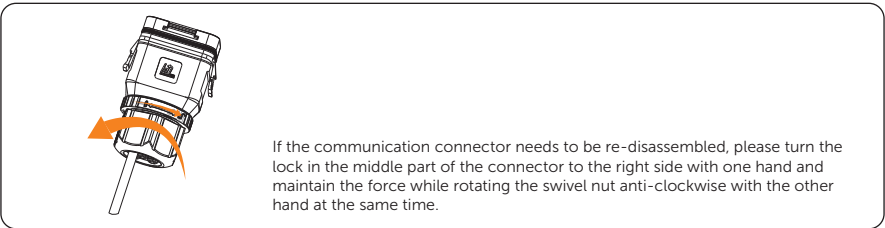
b. If connect via section C (Use two-core cable):



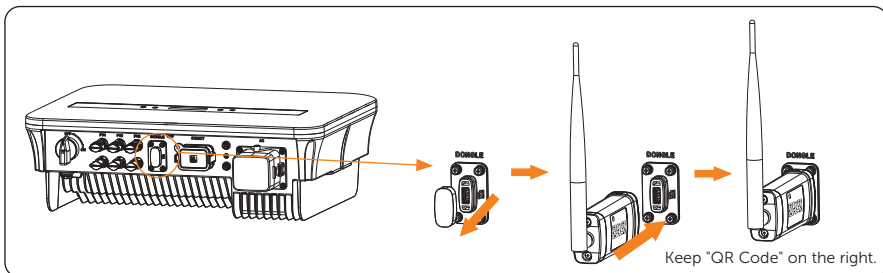
Step 3: Connect to the inverter



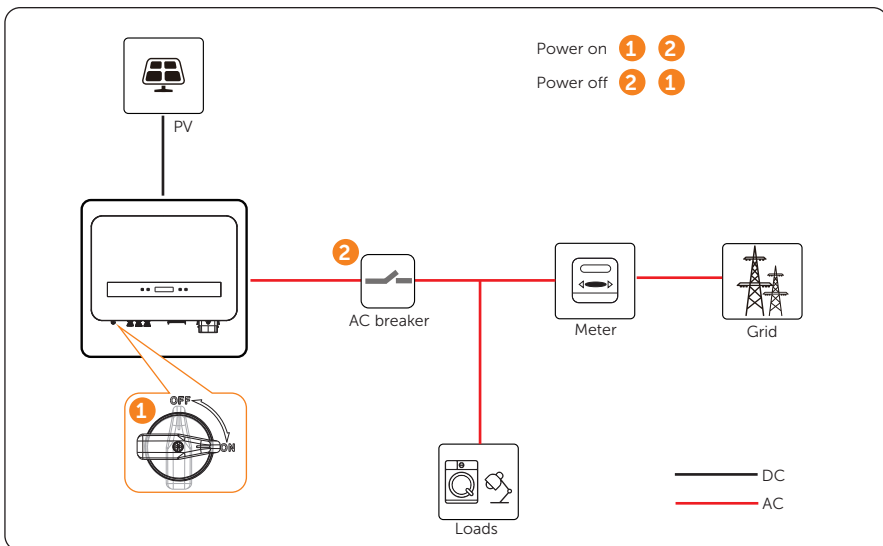
Note: If the communication connector needs to be re-disassembled:



Monitoring Connection / Überwachungs-Anschluss / Branchement de surveillance / Conexión de monitorización / Ligaçao à Monitorizaçao / Monitoring-aansluiting / Collegamento monitoraggio / Potężenie na potrzeby monitorowania / Pripojení ke sledování / Övervakningsanslutning / Conexiune de monitorizare / МОНИТОРИНГОВА връзка / Övervakningsforbindelse / Σύνδεση παρακολούθησης / Seire ühendus / Valvontaliitäntä / Priklučak za nadzor / Monitoring bekötés / Stebėjimo ryšys / Uzraudzības savienojums / Pripojenie monitorovania / Povezava za spremljanje / İzleme Bağlantısı / Conexão de Monitoramento

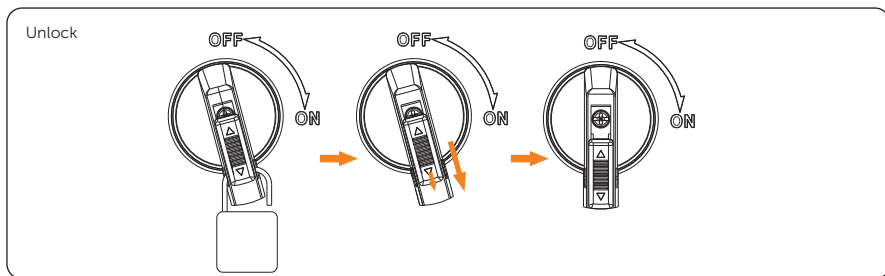
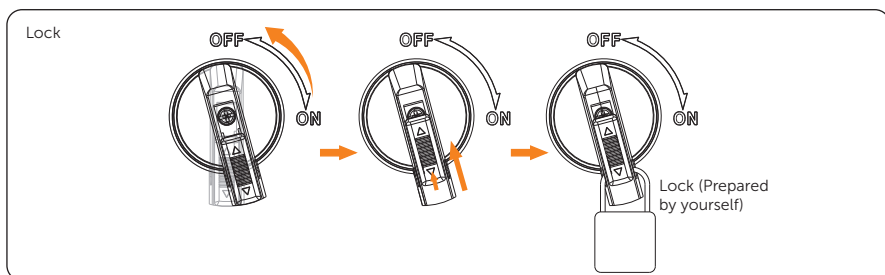
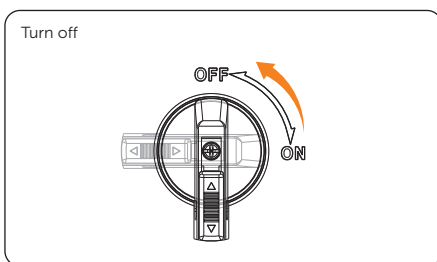
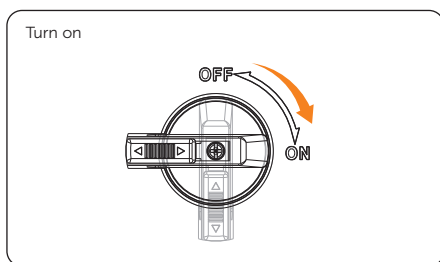
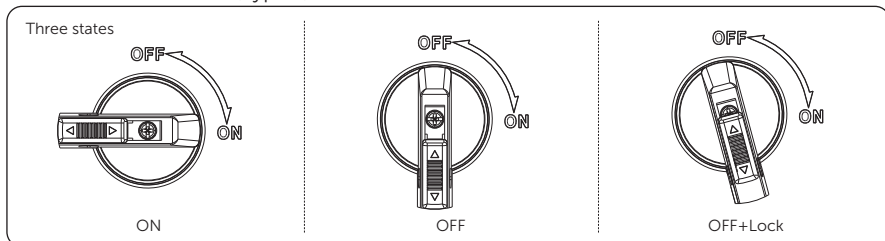


Power On/Off / Einschalten/Ausschalten / Marche/Arrêt / Encendido/apagado / Ligar/Desligar / In-/uitschakelen / Accensione/Spengimento / Włączanie/wyłączanie zasilania / ZAP/VYP / Ström på/av / Pornire/Oprire / Включване/изключване / Strøm til/fra / Ενεργοποίηση/Απενεργοποίηση / Toide sisse/välja / Virta päälle/pois / Uključivanje/isključivanje napajanja / Be-/kikapcsolás / Maitinimo įjungimas / išjungimas / Barošanas ieslēgšana/izslēgšana / Napájanie zapnuté/vypnuté / Vkllop/izklop / Güç Açık/Kapalı / Ligar/Desligar

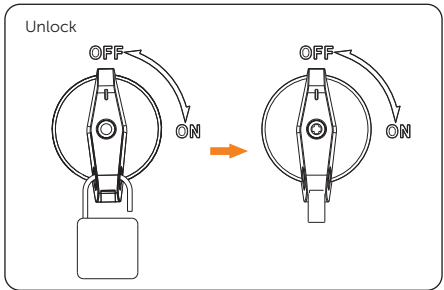
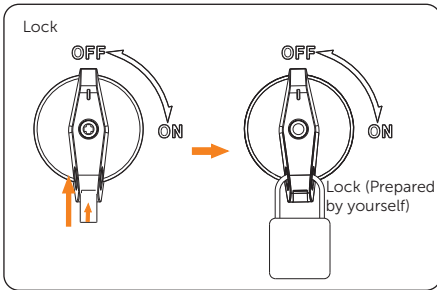
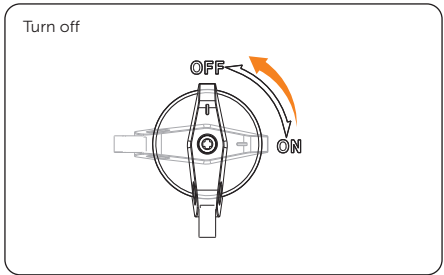
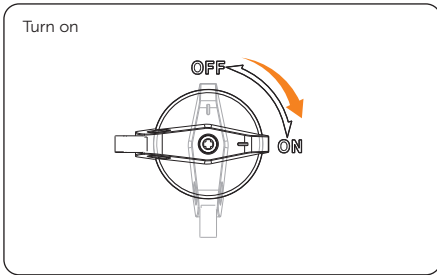
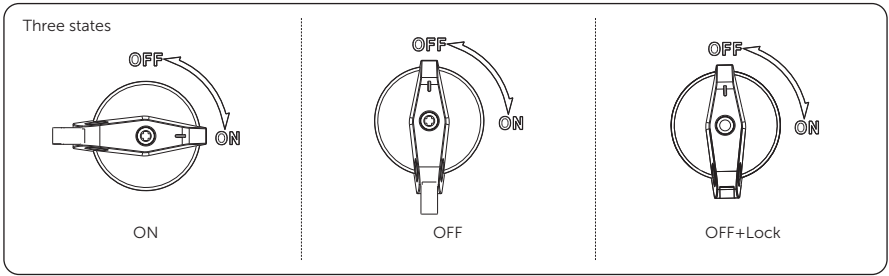


Lockable DC Switch / Abschließbarer DC-Schalter / Interrupteur CC verrouillable / Interruptor de CC con bloqueo / Interruptor CC Bloqueável / Vergrendelbare DC-schakelaar / Interruttore CC bloccabile / Blokowany przelacznik prądu stałego / Uzamykatelny DC vypinač / Låsbar DC-brytare / Comutator DC blocabil / Заключващ се превключвател за постоянен ток / Låsbar DC-afbryder / Διακόπτης DC με δυνατότητα κλειδώματος / Lukustatav alalisvoolu-lüliti / Lukittava DC-kytkin / Prekidač istosmjernje struje (DC) koji se može blokirati / Zárható DC kapcsoló / Užrakinamas nuolatinės srovės jungiklis / Bloķējams līdzstrāvas slēdzis / Uzamykatelný spínač jednosmerného prúdu / DC stikalo z možnostjo zaklepanja / Kilitlenebilir DC Anahtarı / Interruptor CC bloqueável

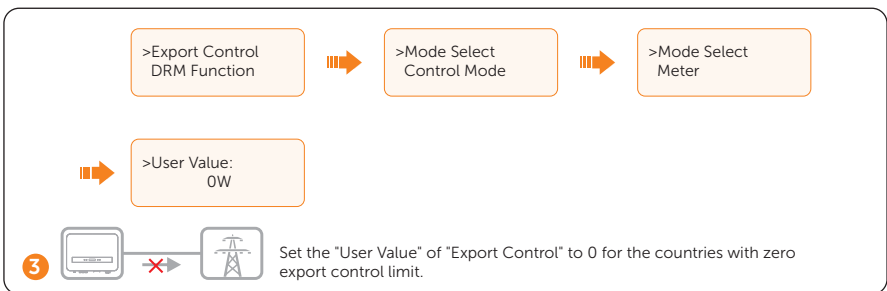
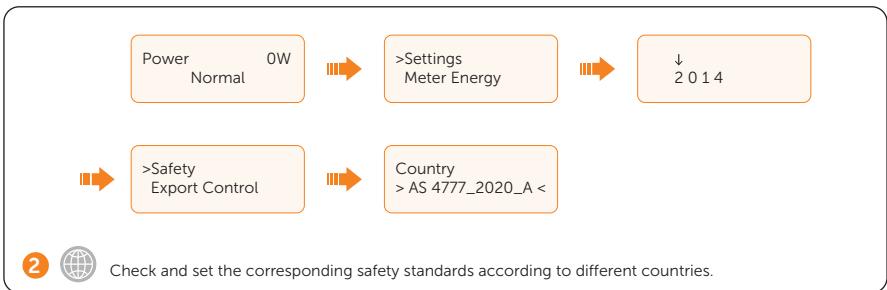
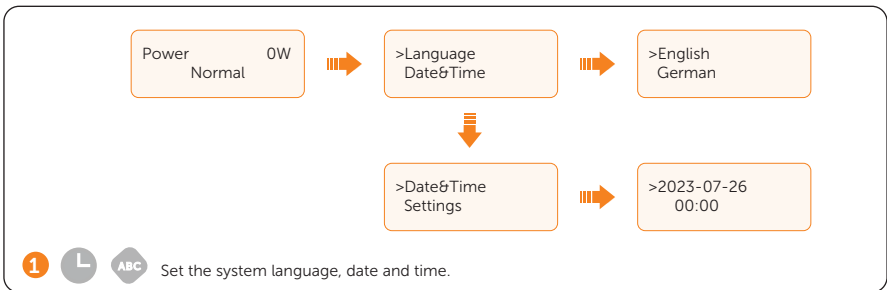
- Lockable DC switch (Type 1)



- Lockable DC switch (Type 2)



General Setting / Allgemeine Einstellungen / Paramètres généraux / Configuración general / Definição Geral / Algemene instelling / Impostazione generale / Ustawienia ogólne / Obecné nastavení / Generell inställning / Setare general / Обща настройка / Genel indstilling / Γενική τοποθέτηση / Üldine seadistus / Yleisasetus / Опće postavke / Általános beállítás / Bendrasis nustatymas / Vispārīgs iestatījums / Všeobecné nastavenie / Splošna nastavitve / Genel Ayar / Configuração Geral



\* The initial password is 1234 which should be changed for the consideration of account security.

SolaXCloud Download / SolaXCloud Download / Téléchargement SolaXCloud / Descarga de SolaXCloud / Descarga do SolaXCloud / SolaXCloud Downloaden / SolaXCloud Download / Pobieranie SolaXCloud / Stáhnout SolaXCloud / SolaXCloud nedladdning / Descărcare SolaXCloud / Изтегляне на SolaXCloud / Hent SolaXCloud / Λήψη SolaXCloud / SolaXCloud'i allalaadimine / SolaXCloudin lataus / Preuzimanje SolaXCloud / SolaXCloud Letöltés / „SolaXCloud“ atsiuntimas / SolaXCloud lejupielāde / Stiahnuť SolaXCloud / Prenesi SolaXCloud / SolaXCloud İndirmesi / Download do SolaXCloud



Scan the QR code to download the SolaXCloud App. Follow the online document in the SolaXCloud App to complete the corresponding operations.

Technical Data / Technische Daten / Fiche technique / Datos técnicos / Dados Técnicos / Technische gegevens / Dati tecnici / Dane techniczne / Technické údaje / Techniska data / Date tehnice / Технически данни / Tekniske data / Τεχνικά δεδομένα / Tehnilised andmed / Tehniset tiedot / Tehnički podaci / Műszaki adatok / Techniniai duomenys / Tehniskie dati / Technické údaje / Tehnični podatki / Teknik Bilgiler / Dados Técnicos

- DC input

| Model  | X1-SMT-5K-G2 | X1-SMT-6K-G2 | X1-SMT-7K-G2 | X1-SMT-8K-G2 | X1-SMT-9K-G2 | X1-SMT-10K-G2 |
|--|--------------|--------------|--------------|--------------|--------------|---------------|
| Max. PV voltage [d.c. V]                             | 600          |              |              |              |              |               |
| MPPT voltage range [d.c. V]                          | 40-560       |              |              |              |              |               |
| Max. PV current [d.c. A]                             | 20/20/20     |              |              |              |              |               |
| Isc PV array short circuit current [d.c. A]          | 25/25/25     |              |              |              |              |               |
| Max. inverter backfeed current to the array [d.c. A] | 0            |              |              |              |              |               |

| Model  | X1-SMT-7KT-G2 | X1-SMT-7.5KT-G2 | X1-SMT-8KT-G2 | X1-SMT-9KT-G2 | X1-SMT-10KT-G2 |
|--|---------------|-----------------|---------------|---------------|----------------|
| Max. PV voltage [d.c. V]                             | 600           |                 |               |               |                |
| MPPT voltage range [d.c. V]                          | 40-560        |                 |               |               |                |
| Max. PV current [d.c. A]                             | 20/20         |                 |               |               |                |
| Isc PV array short circuit current [d.c. A]          | 25/25         |                 |               |               |                |
| Max. inverter backfeed current to the array [d.c. A] | 0             |                 |               |               |                |

- AC output

| Model  | X1-SMT-5K-G2            | X1-SMT-6K-G2 | X1-SMT-7K-G2 | X1-SMT-8K-G2 | X1-SMT-9K-G2 | X1-SMT-10K-G2 |
|--|-------------------------|--------------|--------------|--------------|--------------|---------------|
| Rated output apparent power [VA]               | 4999                    | 6000         | 7000         | 8000         | 9000         | 9999          |
| Max. output apparent power [VA]                | 4999                    | 6600         | 7700         | 8800         | 9900         | 9999          |
| Nominal AC voltage [a.c. V]                    | 220/230/240             |              |              |              |              |               |
| Nominal AC frequency [Hz]                      | 50/60 (±5)              |              |              |              |              |               |
| Rated output current [a.c. A]*                 | 21.8                    | 26.1         | 30.5         | 34.8         | 39.2         | 43.5          |
| Max. output continuous current [a.c. A]        | 22.8                    | 30           | 35           | 40           | 45           | 45.5          |
| Current (inrush) [a.c. A]                      | 13.2 (84 µs)            |              |              |              |              |               |
| Power factor range                             | 0.8 leading-0.8 lagging |              |              |              |              |               |
| Maximum output fault current [a.c. A]          | 62.4                    |              |              | 97           |              |               |
| Maximum output overcurrent protection [a.c. A] | 52.4                    |              |              | 80           |              |               |
| Short circuit current [a.c. A]                 | 78                      |              |              | 115          |              |               |

| Model  | X1-SMT-7KT-G2           | X1-SMT-7.5KT-G2 | X1-SMT-8KT-G2 | X1-SMT-9KT-G2 | X1-SMT-10KT-G2 |
|--|-------------------------|-----------------|---------------|---------------|----------------|
| Rated output apparent power [VA]               | 7000                    | 7500            | 8000          | 9000          | 9999           |
| Max. output apparent power [VA]                | 7700                    | 7500            | 8800          | 9900          | 9999           |
| Nominal AC voltage [a.c. V]                    | 220/230/240             |                 |               |               |                |
| Nominal AC frequency [Hz]                      | 50/60 (±5)              |                 |               |               |                |
| Rated output current [a.c. A]*                 | 30.5                    | 32.7            | 34.8          | 39.2          | 43.5           |
| Max. output continuous current [a.c. A]        | 35                      | 34.1            | 40            | 45            | 45.5           |
| Current (inrush) [a.c. A]                      | 13.2 (84 µs)            |                 |               |               |                |
| Power factor range                             | 0.8 leading-0.8 lagging |                 |               |               |                |
| Maximum output fault current [a.c. A]          |                         |                 |               | 97            |                |
| Maximum output overcurrent protection [a.c. A] |                         |                 |               | 80            |                |
| Short circuit current [a.c. A]                 |                         |                 |               | 115           |                |

- Others

| Model                                    | X1-SMT-5K-G2                          | X1-SMT-6K-G2 | X1-SMT-7K-G2 | X1-SMT-8K-G2 | X1-SMT-9K-G2 | X1-SMT-10K-G2 |
|--|---------------------------------------|--------------|--------------|--------------|--------------|---------------|
| Operating ambient temperature range [°C] | -25 to +60                            |              |              |              |              |               |
| Storage temperature [°C]                 | -30 to +70                            |              |              |              |              |               |
| Storage/Operation relative humidity      | 0%-100%                               |              |              |              |              |               |
| Max. operation altitude [m]              | 4000                                  |              |              |              |              |               |
| Ingress protection                       | IP66                                  |              |              |              |              |               |
| Protective class                         | I                                     |              |              |              |              |               |
| Overvoltage category                     | III(MAINS), II(DC)                    |              |              |              |              |               |
| Pollution degree                         | II(Inside), III(Outside)              |              |              |              |              |               |
| Inverter topology                        | Non-isolated                          |              |              |              |              |               |
| Active anti-islanding method             | Frequency Shift                       |              |              |              |              |               |
| Safety                                   | IEC/EN 62109-1/-2                     |              |              |              |              |               |
| Grid monitoring                          | AS/NZS 4777.2, G99, INMETRO, IEC61727 |              |              |              |              |               |

| Model                                    | X1-SMT-7KT-G2                         | X1-SMT-7.5KT-G2 | X1-SMT-8KT-G2 | X1-SMT-9KT-G2 | X1-SMT-10KT-G2 |
|--|---------------------------------------|-----------------|---------------|---------------|----------------|
| Operating ambient temperature range [°C] | -25 to +60                            |                 |               |               |                |
| Storage temperature [°C]                 | -30 to +70                            |                 |               |               |                |
| Storage/Operation relative humidity      | 0%-100%                               |                 |               |               |                |
| Max. operation altitude [m]              | 4000                                  |                 |               |               |                |
| Ingress protection                       | IP66                                  |                 |               |               |                |
| Protective class                         | I                                     |                 |               |               |                |
| Overvoltage category                     | III(MAINS), II(DC)                    |                 |               |               |                |
| Pollution degree                         | II(Inside), III(Outside)              |                 |               |               |                |
| Inverter topology                        | Non-isolated                          |                 |               |               |                |
| Active anti-islanding method             | Frequency Shift                       |                 |               |               |                |
| Safety                                   | IEC/EN 62109-1/-2                     |                 |               |               |                |
| Grid monitoring                          | AS/NZS 4777.2, G99, INMETRO, IEC61727 |                 |               |               |                |

# Contact Information



## UNITED KINGDOM

---

- Unit C-D Riversdale House, Riversdale Road, Atherstone, CV9 1FA
- +44 (0) 2476 586 998
- [service.uk@solaxpower.com](mailto:service.uk@solaxpower.com)



## TURKEY

---

- Fevzi Çakmak mah. aslim cd. no 88 A Karatay / Konya / Türkiye
- [service.tr@solaxpower.com](mailto:service.tr@solaxpower.com)



## USA

---

- +1 (888) 820-9011
- [service.us@solaxpower.com](mailto:service.us@solaxpower.com)



## POLAND

---

- WARSAW AL. JANA P. II 27. POST
- +48 662 430 292
- [service.pl@solaxpower.com](mailto:service.pl@solaxpower.com)



## ITALY

---

- +39 011 19800998
- [support@solaxpower.it](mailto:support@solaxpower.it)



## PAKISTAN

---

- [service.pk@solaxpower.com](mailto:service.pk@solaxpower.com)



## AUSTRALIA

---

- 21 Nicholas Dr, Dandenong South VIC 3175
- +61 1300 476 529
- [service@solaxpower.com.au](mailto:service@solaxpower.com.au)



## GERMANY

---

- Am Tullnaupark 8, 90402 Nürnberg, Germany
- +49 (0) 6142 4091 664
- [service.eu@solaxpower.com](mailto:service.eu@solaxpower.com)
- [service.dach@solaxpower.com](mailto:service.dach@solaxpower.com)



## NETHERLANDS

---

- Twekkeler-Es 15 7547 ST Enschede
- +31 (0) 8527 37932
- [service.eu@solaxpower.com](mailto:service.eu@solaxpower.com)
- [service.bnl@solaxpower.com](mailto:service.bnl@solaxpower.com)



## SPAIN

---

- +34 9373 79607
- [tecnico@solaxpower.com](mailto:tecnico@solaxpower.com)



## BRAZIL

---

- +55 (34) 9667 0319
- [info@solaxpower.com](mailto:info@solaxpower.com)



## SOUTH AFRICA

---

- [service.za@solaxpower.com](mailto:service.za@solaxpower.com)

# Warranty Registration

Please visit the website: <https://www.solaxcloud.com/user-center/> to complete the warranty registration. For more detailed warranty terms, please visit SolaX official website: [www.solaxpower.com](http://www.solaxpower.com).



## **SolaX Power Network Technology (Zhejiang) Co., Ltd.**

Add.: No. 278, Shizhu Road, Chengnan Sub-district, Tonglu County,  
Hangzhou, Zhejiang, China  
E-mail: [info@solaxpower.com](mailto:info@solaxpower.com)

